

FRONT LOADERS

M SERIES




McCORMICK

Power Technology.





McCORMICK FRONT LOADERS: ALWAYS ONE STEP AHEAD

McCormick is committed to constantly improving the performance of its equipment and to set the benchmark for uncompromising quality and design in front loader construction. True to its tradition of excellence, McCormick has developed five new ranges of front-end loaders that will surprise you with their strength, clean design and performance. Designed to be fully compatible with the entire range of McCormick tractors – from the 47-hp X2 model to the 310-hp X8 model – this new lineup of front loaders is built with versatility in mind and will cover a variety of agricultural and forestry applications as well as municipal tasks like the maintenance of green areas and snow removal during the winter months.

Sturdy and efficient, the new front loaders from McCormick offer a number of advantages: excellent levelling accuracy for reduced operator stress and fatigue, higher lift capacity, higher reach. Careful attention has been paid to every detail: the loader is painted with a Red Spirit high-quality paint designed to withstand severe weather conditions and hard wear and is packed and shipped with utmost care to avoid damage.

To ensure maximum efficiency for a variety of handling, transport and maintenance applications, McCormick front loaders are offered with a wide range of implements including light-material buckets, earth buckets, multi-material buckets, manure forks, round bale forks and pallet forks. Striving to be always one step ahead of competition, McCormick designs and manufactures its front loaders, implements and components to the highest quality standards to ensure top performance and long-lasting reliability in any situation.



HIGHLIGHTS

- › Ergonomically-designed joystick for control of following functions: boom raise/lower, bucket load/unload, 3rd and 4th function, Hi-Lo transmission, HML transmission.
- › Crop protection: loader frame does not reduce tractor ground clearance, minimizing crop damage.
- › The front loader does not reduce tractor turning radius.
- › The front loader features a suspension with two nitrogen-charged accumulators for smoother operation and enhanced ride comfort.
- › Rigid hydraulic lines reduce oil overheating and simplify maintenance operations.
- › All McCormick tractor cabs feature a transparent, high-visibility roof hatch that provides unobstructed view of front loader at all times.
- › The front loader can also be installed and used in conjunction with a front-mounted hitch.
- › A Euro implement carrier allows a wide range of compatible implements to be fitted to McCormick front loaders.
- › A bucket level gauge allows operator to determine the angle of implement to the ground, making manoeuvres easier and safer.
- › The loader frame constructed from Domex steel or HLE steel ensures high lift capacity and long life.



Front loader and tractors	7
Front loader lineup	8
Joystick control	11
Mounting and removing loader	12
Front loader technologies	14
Front loader specifications	16
X7.6 STAGE V	18
X6.4	19
X6	20
X5 STAGE V	21
X5.085 STAGE V	22
X4 STAGE V	23
X4 F-GE-GB-XL	24
X2 STAGE V	25
Implements	26





McCORMICK TRACTORS AND FRONT LOADERS: YOUR BEST WORKMATES EVER



With their sturdy construction, efficient performance and aggressive design, our front-end loaders are the perfect match for your McCormick tractor. Designed to enhance your tractor's efficiency and productivity, the McCormick front loaders offer multiple advantages to farmers. Each loader comes fitted with a push-pull adaptor or a Faster multi-coupler. The brackets are designed to distribute the weight over three points: at the front, middle and rear of the loader. This design provides even weight distribution across the entire tractor, thereby reducing the load and, consequently, the wear and tear on the front axle.

HIGH VISIBILITY FOR MAXIMUM SAFETY

All McCormick cabs are equipped with a transparent roof hatch that provides extra visibility during front loader work for ease of operation. All cabs are FOPS-certified to protect operator from falling objects.



IMPLEMENTS FOR EVERY JOB

McCormick offers a comprehensive range of attachments to fit its front-end loader lineup. Designed with efficiency and reliability in mind, McCormick front loader implements will allow operator to move a variety of materials including silage, manure, straw bales and pallets.





Mp range: cutting-edge design for top-class performance

The one-piece frame from top-quality Domex special steel ensures:

- > Best-in-class performance
- > Unequaled strength and long-term durability
- > Innovative design with slim boom profile and integrated hoses and suspension system for unobstructed visibility



Mt range: superior performance and strength

The one-piece frame from high-grade Domex special steel ensures:

- > Excellent performance
- > Sturdy construction and durability
- > Functional design with slim boom profile and hydraulic lines mounted inside the boom for uncluttered view and smooth loader operation



McCORMICK FRONT LOADERS: WORLD-CLASS PERFORMANCE



The new front-end loaders from McCormick feature top-grade steel frames along with cutting-edge design to ensure world-class performance.



Mi range: lightness and performance guaranteed

Oversized, rectangular-section frame built with HLE special steel. A mid-range product that combines quality, high performance and functionality with good value for money.



Mc range: simple and lightweight

Rectangular-section frame from high-quality HLE special steel. A basic range that combines excellent versatility and ease of use with great value for money.



Compact range: specific for compact tractors

Made from high-quality HLE special steel, this range features a compact design that reduces the loader weight and footprint.



MANUAL LEVELLING F VERSION

On loaders with manual levelling, the operator uses the joystick to hold the implement parallel to the ground. This prevents loss of load during handling operations.



MECHANICAL SELF-LEVELLING M VERSION

Loaders with mechanical self-levelling system feature a levelling linkage located below the boom which automatically holds the implement level throughout the lift without the need for the operator to use the joystick. This system reduces operator stress and fatigue.



HYDRAULIC SELF-LEVELLING H VERSION

The self-levelling function is controlled by the hydraulic system which activates a compensating cylinder located under the implement. This system reduces operator workload and fatigue. Not available for the Mc range.



JOYSTICK

McCORMICK JOYSTICKS, ERGONOMIC DESIGN FOR EFFICIENT OPERATION

Designed on ergonomic principles, the new joystick controllers from McCormick provide easy and seamless use for precise loader control and reduced operator fatigue. If not fitted on the tractor as original equipment, a McCormick joystick can be installed at a later stage by choosing from the following options:



TC Basic

Designed with ergonomics in mind, the TC Basic joystick control allows for smooth and comfortable operation in any situation. It controls two hydraulic lines.



TC Profi

The TC Profi features three buttons to control the spool valves equipped with a third hydraulic line. The two side buttons can be used to change gear.



TC Advanced

Featuring eight buttons, this joystick controls the spool valves equipped with third and fourth hydraulic line or with hydraulic implement quick-release system. The two side buttons can be used to change gear.



TC Speed

This electronic proportional control is used to control the electrohydraulic spool valves. It communicates via a CAN-bus interface.

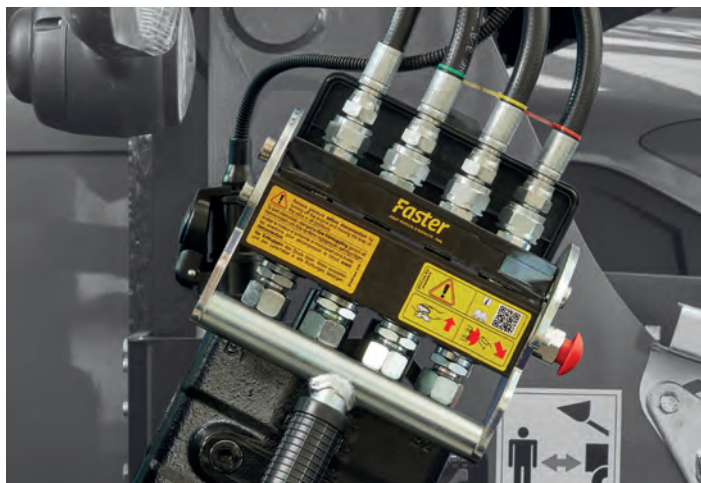
VELOTAK SYSTEM FOR EASY LOADER MOUNTING AND REMOVAL

At McCormick they know there is no true efficiency without true comfort. Based on this assumption, McCormick has developed the Velotak system, an innovative quick-attach/detach system that allows the operator to mount and remove the loader from the tractor in a few seconds by simply moving a lever, without the aid of tools. The loader parking stands can be adjusted with millimetre precision, enabling easy mounting and removal on any terrain or slope. Locking and unlocking positions are marked by coloured stickers. The Velotak system makes the operator's work easier and faster, thereby reducing stress and improving productivity.



FLASH SYSTEM FOR QUICK CONNECTION OF HYDRAULIC LINES

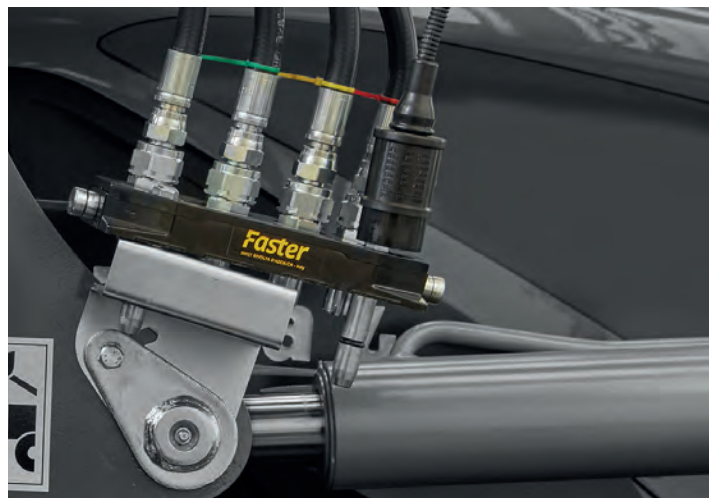
The Flash quick-connect multi-coupler allows the operator to connect and disconnect all hydraulic lines with a single operation. The Flash multi-coupler comes standard on all Mt and Mp loaders and is available as an option on the Mc and Mi ranges.





QRC FLASH CONNECTOR FOR THIRD-FUNCTION HYDRAULIC LINE

This connector provides simple and reliable connection of implements requiring third-function hydraulics. The QRC Flash allows operator to connect and disconnect all implement lines with a single operation, including when the system is pressurized. The connector is easy to clean to prevent dirt build-up in the loader and tractor hydraulics.



3SL/4SL FEATURE FOR IMPLEMENTS WITH ADDITIONAL HYDRAULIC FUNCTIONS

The 3SL and 4SL features allow the use of implements with additional hydraulic functions such as grabs with extra lift capacity and side-shift function. A cover protects the solenoid valves from shocks and wear.





EURO IMPLEMENT CARRIER

This is the basic version on the Mp, Mt, Mi and Mc loader ranges. This type of implement carrier meets the ISO 23206 standard and allows for easy connection of all implements with Euro attachment system. This carrier comes in Euro-Eco version for the Mc range and in a Euro System quick-release version for the other ranges.



McCORMICK IMPLEMENT CARRIER

This quick-release implement carrier is available for the Mp, Mt, Mi and Mc loader ranges. This type of implement carrier has an attachment system that matches only the McCormick implements.



COMPACT IMPLEMENT CARRIER

This implement carrier is specially designed for the Compact loader range. It is compatible with the implements developed by McCormick specifically for the Compact range.

1 GENIUS SUSPENSION SYSTEM

A suspension system with two nitrogen accumulators help absorb the shocks and vibrations produced during loader work, minimizing stress on both tractor and front loader. The Genius suspension also limits tyre wear and reduces operator fatigue while ensuring smooth operation. The device is equipped with a protection cover and a shutoff valve for overriding the system when required. The Genius suspension system is standard on all Mp and Mt models and optional on the other ranges.



4 3rd FUNCTION AND 3rd + 4th FUNCTION

These options are required when the front-end loader operates implements equipped with hydraulic functions. The third function is required to operate implements like buckets, forks with grapple, grab forks and side-shift forks. The third and fourth function is required for more complex implements such as round bale forks with extra lift and side-shift function.

FLOATING 4th POSITION

This device is mounted on the hydraulic block to power the front loader cylinders. The floating 4th position is recommended when using implements that follow the ground contour.



2 BUCKET LEVEL INDICATOR

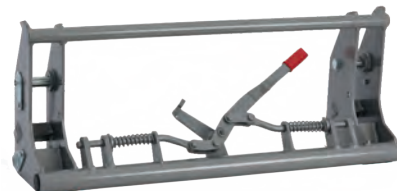
All McCormick front loaders are equipped with a bucket level indicator which assists the operator in determining the bucket position at ground level during handling operations.

3 PARKING STANDS

The McCormick front-end loaders feature long parking stands with adjustable cross braces ensuring maximum stability on uneven or sloping ground. During loader work, the parking stands are stored inside the boom to ensure that they do not interfere with the tractor wheels.

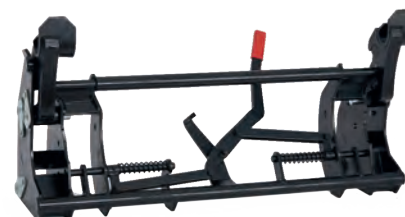
FAST AND EASY MAINTENANCE

The brackets of the McCormick front loaders are designed to allow ease of access to all tractor service points, making routine maintenance tasks effortless and time-saving for enhanced operator convenience.



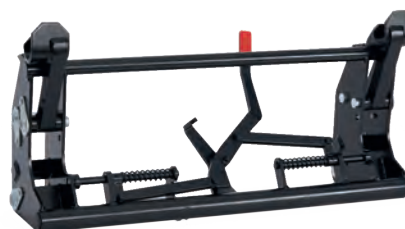
HYDRO IMPLEMENT CARRIER

The Hydro carrier allows the operator to comfortably attach and detach implements by simply using the joystick, without dismounting the tractor. This quick connect/disconnect system requires a dedicated hydraulic line.



COMBI IMPLEMENT CARRIER

This implement carrier allows the use of a single attachment system to connect both Euro standard and ALO/Q3 implements. With the addition of special adaptors, the Combi carrier also allows the use of MX implements.



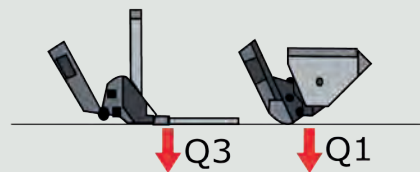
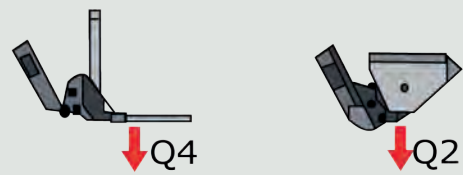
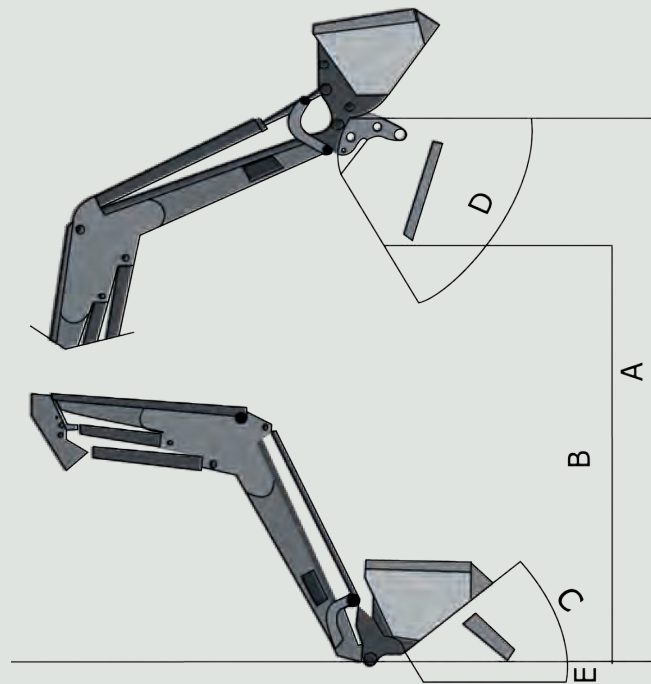
DUAL SYSTEM IMPLEMENT CARRIER

The Dual System carrier allows the use of a single attachment system to connect all Euro standard implements. With the addition of special adaptors, this carrier also allows the use of MX implements.

FRONT LOADER SPECIFICATIO



ONS



X7.6 STAGE V



M50tm



M50ph

	ref	um	FRONT LOADER MODELS	
			M50tm	M50ph
Lift capacity with bucket at ground level, measured at 300 mm from pivot point	Q1	kg	2700	2700
Lift capacity with bucket fully raised, measured at 300 mm from pivot point	Q2	kg	2400	2400
Maximum lift height at pivot point	A	mm	4400	4400
Maximum lift height at pivot point with bucket dumped	B	mm	3500	3500
Bucket rollback angle at ground level	C	-	45	45
Bucket dump angle	D	-	90	90
Euro implement carrier			YES	YES
Lift time to full height*		s	9	9
Bucket dump time*		s	5	3
Sigma4 implement carrier			OPTION	OPTION
Boom weight without options		kg	735	725

* Value obtained by reference to a hydraulic pump with an average flow rate of 40 l/min. Clearly, this value will decrease when using a higher flow rate pump and will increase when a lower flow rate pump is used.



X6.4



M30im



M30tm

	ref	um	FRONT LOADER MODELS	
			M30im	M30tm
Lift capacity with bucket at ground level, measured at 300 mm from pivot point	Q1	kg	1700	2000
Lift capacity with bucket fully raised, measured at 300 mm from pivot point	Q2	kg	1650	1900
Maximum lift height at pivot point	A	mm	3870	3870
Maximum lift height at pivot point with bucket dumped	B	mm	3010	3010
Bucket rollback angle at ground level	C	-	45	45
Bucket dump angle	D	-	90	90
Euro implement carrier			YES	YES
Lift time to full height*		s	7	9
Bucket dump time*		s	5	5
Sigma4 implement carrier			OPTION	OPTION
Boom weight without options		kg	533	680

* Value obtained by reference to a hydraulic pump with an average flow rate of 40 l/min. Clearly, this value will decrease when using a higher flow rate pump and will increase when a lower flow rate pump is used.

X6



M20cm



M20im



M20tm

			FRONT LOADER MODELS		
	ref	um	M20cm	M20im	M20tm
Lift capacity with bucket at ground level, measured at 300 mm from pivot point	Q1	kg	1200	1500	1800
Lift capacity with bucket fully raised, measured at 300 mm from pivot point	Q2	kg	1220	1400	1700
Maximum lift height at pivot point	A	mm	3800	3800	3800
Maximum lift height at pivot point with bucket dumped	B	mm	2940	2940	2940
Bucket rollback angle at ground level	C	-	45	45	45
Bucket dump angle	D	-	90	90	90
Euro implement carrier			YES	YES	YES
Lift time to full height*		s	7	7	9
Bucket dump time*		s	5	5	5
Sigma4 implement carrier			OPTION	OPTION	OPTION
Boom weight without options		kg	400	500	620

* Value obtained by reference to a hydraulic pump with an average flow rate of 40 l/min. Clearly, this value will decrease when using a higher flow rate pump and will increase when a lower flow rate pump is used.



X5 STAGE V



M20cm



M20im



M20tm

		FRONT LOADER MODELS			
	ref	um	M20cm	M20im	M20tm
Lift capacity with bucket at ground level, measured at 300 mm from pivot point	Q1	kg	1200	1500	1800
Lift capacity with bucket fully raised, measured at 300 mm from pivot point	Q2	kg	1220	1400	1700
Maximum lift height at pivot point	A	mm	3800	3800	3800
Maximum lift height at pivot point with bucket dumped	B	mm	2940	2940	2940
Bucket rollback angle at ground level	C	-	45	45	45
Bucket dump angle	D	-	90	90	90
Euro implement carrier			YES	YES	YES
Lift time to full height*		s	7	7	9
Bucket dump time*		s	5	5	5
Sigma4 implement carrier			OPTION	OPTION	OPTION
Boom weight without options		kg	400	500	620

* Value obtained by reference to a hydraulic pump with an average flow rate of 40 l/min. Clearly, this value will decrease when using a higher flow rate pump and will increase when a lower flow rate pump is used.

X5.085 STAGE V



M15cm



M15im

			FRONT LOADER MODELS	
	ref	um	M15cm	M15im
Lift capacity with bucket at ground level, measured at 300 mm from pivot point	Q1	kg	900	1100
Lift capacity with bucket fully raised, measured at 300 mm from pivot point	Q2	kg	880	1000
Maximum lift height at pivot point	A	mm	3300	3300
Maximum lift height at pivot point with bucket dumped	B	mm	2360	2360
Bucket rollback angle at ground level	C	-	45	45
Bucket dump angle	D	-	90	90
Euro implement carrier			YES	YES
Lift time to full height*		s	7	7
Bucket dump time*		s	5	5
Sigma4 implement carrier			OPTION	OPTION
Boom weight without options		kg	340	443

* Value obtained by reference to a hydraulic pump with an average flow rate of 40 l/min. Clearly, this value will decrease when using a higher flow rate pump and will increase when a lower flow rate pump is used.



X4 STAGE V



M10cm



M10im

			FRONT LOADER MODELS	
	ref	um	M10cm	M10im
Lift capacity with bucket at ground level, measured at 300 mm from pivot point	Q1	kg	900	1100
Lift capacity with bucket fully raised, measured at 300 mm from pivot point	Q2	kg	880	1000
Maximum lift height at pivot point	A	mm	3200	3200
Maximum lift height at pivot point with bucket dumped	B	mm	2260	2260
Bucket rollback angle at ground level	C	-	45	45
Bucket dump angle	D	-	90	90
Euro implement carrier			YES	YES
Lift time to full height*		s	7	7
Bucket dump time*		s	5	5
Sigma4 implement carrier			OPTION	OPTION
Boom weight without options		kg	330	433

* Value obtained by reference to a hydraulic pump with an average flow rate of 40 l/min. Clearly, this value will decrease when using a higher flow rate pump and will increase when a lower flow rate pump is used.

X4 (F-GE-GB-XL)

CAB / PLAT



M15cm



M15im

			FRONT LOADER MODELS	
	ref	um	M15cm	M15im
Lift capacity with bucket at ground level, measured at 300 mm from pivot point	Q1	kg	900	1100
Lift capacity with bucket fully raised, measured at 300 mm from pivot point	Q2	kg	880	1000
Maximum lift height at pivot point	A	mm	3300	3300
Maximum lift height at pivot point with bucket dumped	B	mm	2360	2360
Bucket rollback angle at ground level	C	-	45	45
Bucket dump angle	D	-	90	90
Euro implement carrier			YES	YES
Lift time to full height*		s	7	7
Bucket dump time*		s	5	5
Sigma4 implement carrier			OPTION	OPTION
Boom weight without options		kg	340	443

* Value obtained by reference to a hydraulic pump with an average flow rate of 40 l/min. Clearly, this value will decrease when using a higher flow rate pump and will increase when a lower flow rate pump is used.



X2 STAGE V

CAB / PLAT

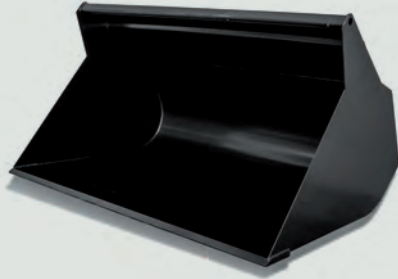


M830m

			FRONT LOADER MODELS	
	ref	um	M830m	
Lift capacity with bucket at ground level, measured at 300 mm from pivot point	Q1	kg	650	
Lift capacity with bucket fully raised, measured at 300 mm from pivot point	Q2	kg	600	
Maximum lift height at pivot point	A	mm	2550	
Maximum lift height at pivot point with bucket dumped	B	mm	1800	
Bucket rollback angle at ground level	C	-	45	
Bucket dump angle	D	-	85	
Euro implement carrier			NO	
Lift time to full height*		s	5	
Bucket dump time*		s	4	
Sigma4 implement carrier			YES	
Boom weight without options		kg	180	

* Value obtained by reference to a hydraulic pump with an average flow rate of 40 l/min. Clearly, this value will decrease when using a higher flow rate pump and will increase when a lower flow rate pump is used.

Cereal Bucket



	WIDTH (mm)	LENGTH X HEIGHT (mm)	SAE CAPACITY (m ³)	WEIGHT (Kg)
BC 1800	1800	958 x 1050	0.88	266
BC 2000	2000	958 x 1050	0.99	284
BC 2200	2200	958 x 1050	1.09	305
BC 2400	2400	958 x 1050	1.19	322

Stone Bucket



	WIDTH (mm)	LENGTH X HEIGHT (mm)	WEIGHT (Kg)
BSA 1600	1600	965 x 750	280
BSA 1800	1800	965 x 750	325
BSA 2000	2000	965 x 750	355
BSA 2200	2200	965 x 750	390
BSA 2400	2400	965 x 750	425

Earth Bucket



	WIDTH (mm)	LENGTH X HEIGHT (mm)	SAE CAPACITY (m ³)	WEIGHT (Kg)
BT 1350	1350	790 x 735	0.36	160
BT 1500	1500	790 x 735	0.41	170
BT 1600	1600	790 x 735	0.43	175
BT 1800	1800	790 x 735	0.49	198
BT 2000	2000	790 x 735	0.55	205
BT 2200	2200	790 x 735	0.60	215
BT 2400	2400	790 x 735	0.66	247

Grab Bucket



	WIDTH (mm)	LENGTH X HEIGHT (mm)	SAE CAPACITY (m ³)	WEIGHT (Kg)
BK 1500	1500	1150 x 910	0.76	342
BK 1980	1980	1150 x 910	1	412
BK 2200	2200	1150 x 910	1.12	430

Multipurpose Bucket

	WIDTH (mm)	LENGTH X HEIGHT (mm)	SAE CAPACITY (m ³)	WEIGHT (Kg)
BM 2000	2000	1090 x 1060	1.1	562
BM 2200	2200	1090 x 1060	1.21	612



Manure Fork

	WIDTH (mm)	LENGTH X HEIGHT (mm)	TEETH (Nm)	WEIGHT (Kg)
FLE 1500	1500	900 x 800	7	135
FLE 1980	1980	900 x 800	9	170
FLE 2200	2200	900 x 800	10	180



Pallet Fork

	WIDTH X LENGTH X HEIGHT (mm)	MAX LOAD CAPACITY (Kg)	WEIGHT (Kg)
FP 1200	1200 x 400 x 1140	1000	140
		2000	150



Grab for Round Bales


WIDTH X LENGTH X HEIGHT (mm)	BALE SIZE MIN/MAX (mm)	MAX LOAD CAPACITY (Kg)	ADDITIONAL HYDRAULIC LINES	WEIGHT (Kg)
min/max 1160-2550 x 900 x 1600	800 / 1500	1000	2	233



Servizio Ricambi | Parts Department

viale della Resistenza, 39 | 42018 San Martino in Rio [RE] Italia
t. +39.0522.735.511 | f. +39.0522.735.526
parts@argotractors.com | www.argotractors.com



6697635A 09/2021 

graphic design: **gruppo saldatori** | www.grupposaldatori.com
All data and illustrations provided in this brochure are for information purposes only and can be changed without notice