

X4E



080 - 090 - 100 - 110 - 120 F / N / GE / GB / XL / V



McCORMICK X4F, FRUITFUL PRODUCTIVITY

Integration of resources and specialisation have always been the strengths that drive Argo Tractors' industrial strategy. Thanks to this winning choice, the Group's designers have developed the new McCormick X4F, a model that sets a benchmark in the specialty tractor segment.

McCormick X4F guarantees top-level performance in terms of TECHNOLOGY, COMFORT, VERSATILITY, EFFICIENCY and PRODUCTIVITY. A true concentration of innovative solutions, offering targeted answers to the needs of farms.

The innovative design of the X4F is immediately recognisable: the energetic and dynamic lines of the bonnet allow agile work between the rows. The full-LED lights are perfectly integrated in the front grille; the cab, with panoramic visibility, flat floor and telescopic mirrors, is in pure automotive style. The X4F is also available in a Red Spirit Limited Edition version, with metallic red paint and matt black rims, expressing McCormick's true strength. Every detail of the X4F has been designed with innovation and performance in mind to ensure class-leading productivity.

The X4F comes in 2 versions:

- › **Cab**, with models F, N, XL, V.
- › **Plat**, with models F, GE, GB, XL.

The X4F series offers a choice of transmissions and a variety of wheelbases, heights and track widths and comes in six models to suit specific applications:

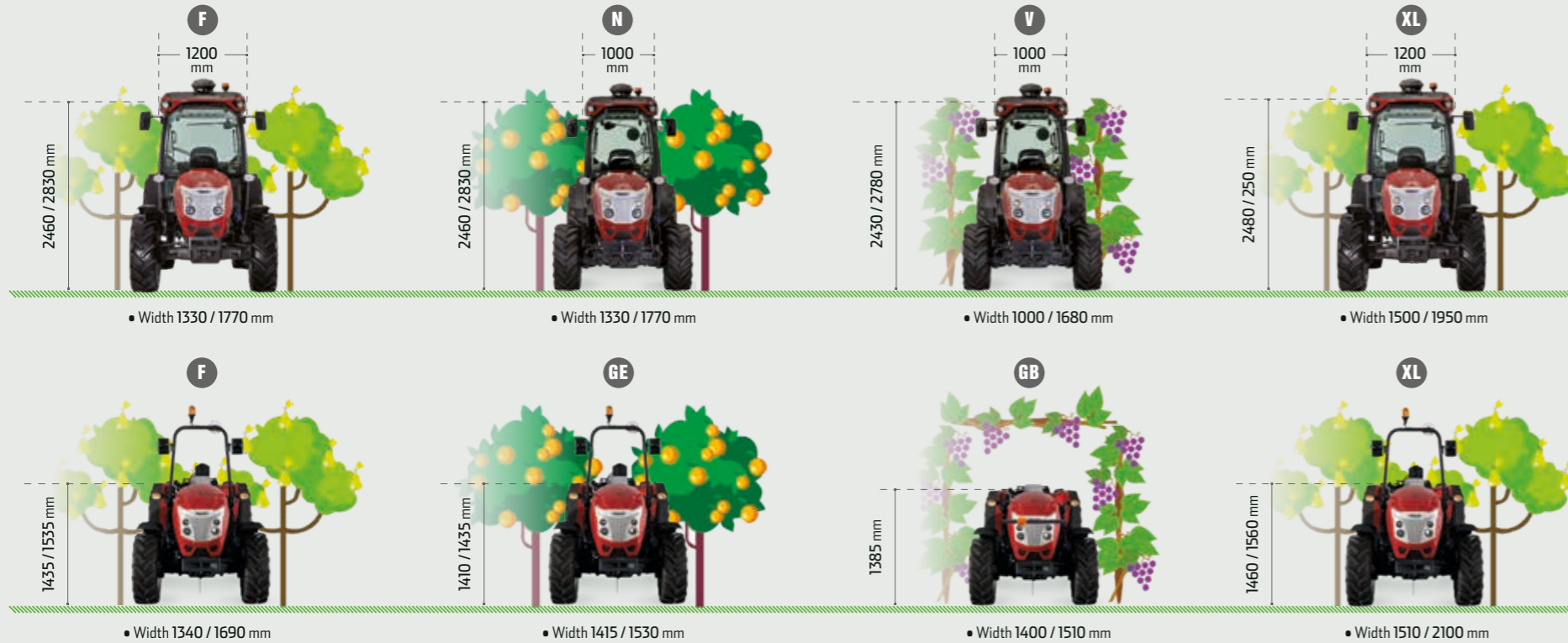
- › **F Model**, for small and medium sized orchards.
- › **N Model**, for narrow orchards trained in goblet style: it features the track width of the F model and the narrow cab of the V model.
- › **GE Model**, for low orchards: perfect for working under low-hanging crops.
- › **GB Model**, ultra-low profile: for operation under overhead trellis systems and inside greenhouses.
- › **XL Model**, for wide orchards: , ideal for wide row orchards and open field work.
- › **V Model**, for vineyards: specifically designed for working between narrow vineyard rows.

HIGHLIGHTS

- › Cab version with flat-deck platform. Plat version with lowered floor.
- › McCormick Red Spirit Limited Edition: metallic red colour and matt black rims, for a unique and aggressive style.
- › New full-LED lights.
- › Automotive-grade fit and finish and ergonomic controls.
- › Speed Four transmission: 4 speeds and 3 ranges with synchro or power shuttle, 4 optional creep speed ranges. Available options: Power Four (Hi-Lo),

- Xtrashift (High-Medium-Low), P3-Drive (High-Medium-Low) with robotised shifting of the powershift gears and speeds.
- › The F, N and XL models can be equipped with the new suspended front axle.
- › The hydraulic system of the **X4F** offers the highest degree of configurability in the row-crop tractor segment to cater for farmers' individual needs.
- › Open centre hydraulic circuit: double pump with 58 + 30 l/min or triple pump with 30 + 58 + 36 l/min. Flow rate of 54 l/min at only 1,500 rpm.

- › Wide selection of tyres. Reinforced Waffle rims are available to support higher loads during work and provide more stability during transport.
- › New Deutz-AG TCD 2.9L, 4-cylinder engine delivering 75 to 112 hp, meeting Stage V/Tier 4 Final emissions regulations.
- › Maintenance intervals of up to 1,000 hours.
- › Agriculture 4.0: ISObus, telemetry, ADS ready for assisted driving and DSM monitor.



DIGITAL SOLUTIONS

More Control, More Productivity.
page 24

HYDRAULIC SYSTEM

Innovative, Efficient, Versatile.
page 20

ENGINE

Stage V / Tier4 Final.
page 32

EMISSIONS

Eco-sustainability.
page 33

SUSPENDED AXLE

Agile, Safe, Comfortable.
page 18

CAB

Visibility, Comfort,
Category 4 Protection.
page 6

ISOBUS

More Operational Efficiency.
page 29

ELECTRONIC HITCH

Precise and Powerful.
page 23

TRANSMISSION

Highly Configurable.
page 14



VISIBILITY, COMFORT, HEALTH: THE PREMIERE CAB IS PERFECT FOR ROW CROPS

From the cab you have an unobstructed view of the implements.

Keyword: maximum visibility! With its four-post design, the new Premiere Cab of the X4F allows a 360-degree panoramic visibility. The opening front and rear windows also allow the driver to lean out to check the implements and monitor the work area to avoid obstacles. Integrated in the roof, four full-LED lights provide excellent visibility during night work.

In the cab, comfort is assured, both during work and transport.

Keyword: complete comfort! The Premiere Cab is suspended to isolate you from vibrations during field work and transport. Reducing shocks means protecting your back and mitigate fatigue. In addition, the flat, uncluttered platform allows for easy access to the driver's seat and provides enhanced operating comfort.

Inside the cab, your health is protected, even during pesticide spraying.

Keyword: health protection! The new Premiere Cab is pressurised and equipped with a Category 4 activated carbon filter. This system prevents the penetration of chemical agents into the cab during crop treatments, meaning you no longer need to wear bulky PPE.





HIGHLIGHTS

- › Four-post cab design for full panoramic visibility.
- › Flat platform for maximum operating comfort.
- › Cab suspension on Hydro silent blocks or spring-loaded shock absorbers.
- › Driver's seat with air suspension and tilting telescopic steering wheel.
- › Ergonomic controls and monitor bar with adjustable stand.
- › Automotive-style fit and finish.
- › Excellent acoustic and thermal insulation.
- › Category 4 activated carbon filter protection, for safe handling of pesticides.

PREMIERE CAB: ALL-ROUND VISIBILITY AND COMFORT

The Premiere Cab, the new cab of the X4F, offers the operator a well-lit, comfortable and safe working environment. The four-post design provides full all-round visibility and the rear-hinged doors allow easy access to the driving position. The flat, clutter-free platform, adjustable driver's seat, ergonomic controls, automotive-grade fit and finish and excellent climate control system make working days less tiring and more productive. The external width of the cab is 1,205 mm on the F and XL models and 1,000 mm on the N and V models.



Premiere Cab, the control centre of your productivity

In the Premiere Cab you have full control over your work. The digital instrument panel constantly monitors the tractor; the steering wheel is telescopic and tilts with the dashboard; the seat has air suspension; the control levers, pedals and joystick have an ergonomic layout; the fit and finish is of automotive quality. The cab of the X4F offers a functional working environment that provides greater comfort and more control over your work, which in turn leads to greater productivity.

Advanced Driving System and Precision Steering: all-round advantages

Working row crops is challenging, because driving the tractor and operating the implements simultaneously requires utmost attention. To increase comfort and productivity, McCormick has introduced the Advanced Driving System (ADS). This new driver assist technology allows the tractor to manage the driving trajectory, enabling the operator to fully focus on their task. Seamlessly integrated with the Precision Steering Management (PSM) satellite guidance system, the ADS follows precisely the planned trajectories, without the need for additional devices. Moreover, the ADS makes the steering wheel stiffer as the speed increases and softer when maneuvering, allowing the wheels to automatically return to a straight position after a turn. The ADS system also adapts the vehicle's driving behavior to the ground conditions, reducing impacts and vibrations.

IDEAL CLIMATE ALL YEAR ROUND

The Premiere Cab's efficient climate control system creates a perfect working environment all year round. The system and the control console are conveniently located on the cab roof. Natural ventilation is provided by the opening front and rear windscreens.



SUSPENDED AXLE AND CAB: MORE COMFORT, MORE PRODUCTIVITY

The Premiere Cab is suspended on the Hydro silent blocks. The F and XL models can be fitted with mechanical spring-loaded shock absorbers, for a vertical travel of -30 / +30 mm. On the F, N and XL models, the front axle can be suspended: reducing vibrations and working in greater comfort ensures greater productivity.

LOW NOISE AND HEALTH PROTECTION

Excellent cab pressurisation and soundproofing systems ensure excellent noise insulation and a dust-free working environment. Furthermore, a Category 4 activated carbon filter protects the operator from contamination during the application of pesticides.



McCORMICK X4F, THE LAUNCHING PAD FOR YOUR PRODUCTIVITY

Maximum visual control over every process.

With the X4F Platform, work is always smooth, even under low-hanging branches. The tractor design allows complete visibility even at short range, which is indispensable when working in confined spaces.

With the X4F Platform, the operator is in focus.

The X4F Platform is a combination of solutions designed to increase comfort and reduce fatigue. These include: a wide, low platform suspended on Hydro silent blocks to reduce shocks from the ground; a spacious driver's workplace; an air seat; a telescopic steering wheel; ergonomic and intuitive controls; and a redesigned panel to enhance functionality.

Quick and easy maintenance for higher productivity.

McCormick has designed and implemented a set of technical solutions that simplify and speed up maintenance and reduce downtime. The benefits are obvious in terms of reduced costs and increased productivity.

HIGHLIGHTS

- › Spacious and comfortable platform, suspended on Hydro silent blocks.
- › F and XL models: new suspended front axle available for increased comfort in the field and during transfers.
- › Access to the driver's seat is easy and unhindered.
- › Full 360° visual control, even at short range.
- › User-friendly ergonomic controls.
- › GB model: the driver's seat is the lowest in this segment.
- › Any elements above the bonnet line can be folded away.

THE X4F PLATFORM IS SPACIOUS, COMFORTABLE AND PRODUCTIVE

The bold styling of the **X4F** Platform combines beauty and efficiency: the vigorous, streamlined contours of the bonnet and the curved lines of the fenders favour smooth effortless work even when the crop rows are low. The driver's seat is large, comfortable, safe and allows complete visual control over every job, for increased productivity.

Multiple solutions to keep the operator in focus

The **X4F** Platform makes any job easier, with solutions such as a spacious, lowered floor suspended on Hydro silent blocks to absorb impacts of rough terrain; easy access to the spacious driver's workstation; air seat and telescopic steering wheel; intuitive, ergonomically positioned controls; and a new panel design to increase functionality. Everything has been designed for maximum comfort: with the **X4F**, the operator is always in focus.



FOLDING ROPS

Thanks to its pneumatic pistons, the ROPS is easy to raise and lower.

Quick and easy maintenance to increase productivity

Reducing downtime means reducing costs and increasing productivity. That is why at McCormick we have come up with a series of technical solutions that ensure easier and faster maintenance:

- 1.** The fuse box, equipped with a flap, is located in a compartment in the central console.
- 2.** The electronic control unit box, located behind the seat, is easy to access.
- 3.** The clutch cable and reverse shuttle are easy to access for servicing, via removable panels positioned on the side of the central tunnel.
- 4.** The parts under the platform and the electrical wiring are easy to access through the cover on the centre tunnel.
- 5.** The rear components for servicing the spool valves and hitch are easy to reach: by unscrewing the supports, the platform can be raised by 50 mm without having to remove it.

X4F GB, the low-clearance specialist

The **X4F** GB features the lowest driver's seat in its class, with a steering wheel height of only 1,280 mm. The steering wheel and backrest are below the bonnet line, and the ROPS and number plate holder can be folded down. A combination of solutions that allows the **X4F** GB to work easily inside greenhouses and under overhead trellis systems as well as to negotiate low-hanging branches such as in kiwi-fruit plantations.





TRANSMISSION WITH MULTIPLE OPTIONS AND ONLY ONE OBJECTIVE: **EFFICIENCY**

The innovative P3-Drive transmission increases comfort and productivity.

The P3-Drive robotised transmission is intuitively operated from the joystick, for truly enhanced comfort. The automatic operation also allows the operator to fully concentrate on the task at hand, resulting in higher productivity.

The transmission of the X4F is a champion of configuration flexibility.

The X4F has a truly versatile transmission that can be configured to the specific needs of each farmer. Customisations include: manual or power-assisted P3-Drive transmission; number of ranges, with or without creeper; mechanical or electrohydraulic Reverse Power Shuttle; no Powershift, Hi-Lo or H-M-L Powershift.

Electro-hydraulic Reverse Power Shuttle, for enhanced operation.

The Reverse Power Shuttle is an electro-hydraulic reverse shuttle that enables automatic engagement and disengagement of the clutch, with response modulation according to the implement used and the type of terrain. With the power shuttle manoeuvres become much quicker and easier, resulting in better comfort and increased productivity.

HIGHLIGHTS

- › P3-Drive transmission featuring 3 powershift gears and 4 speeds with robotised shifting via the electronic multifunction joystick.
- › Electro-hydraulic Reverse Power Shuttle with electronically modulated shuttle response

TRANSMISSION CONFIGURABLE TO YOUR NEEDS



The Speed Four transmission of the **X4F** features 4 synchronised gears and 3 mechanical speed ranges, for a total of 12 FWD + 12 REV speeds. The creeper offers 4 ranges providing 16 FWD + 16 REV speeds. The Speed Four transmission is extensively configurable:

- › Power Four: 2-stage Hi/Lo Powershift, 24 FWD + 24 REV; 32 FWD + 32 REV with Creeper.
- › Xtrashift: 3-stage HML Powershift with 36 FWD + 12 REV; 48 FWD + 16 REV with Creeper.
- › P3-Drive: robotised transmission with 36 FWD + 12 REV; 48 FWD + 16 REV with Creeper, for unrivalled comfort.

ECO FORTY FOR REDUCED FUEL CONSUMPTION AND NOISE

The Eco Forty system, supplied with the Power Four, Xtrashift and P3-Drive transmissions, allows a top speed of 40 km/h at only 1,750 rpm in the high-speed range. This means less noise during transport and, above all, a significant reduction in fuel consumption.

TRANSMISSION COMBINATIONS AVAILABLE FOR X4F CAB	
SYNCHRO SHUTTLE	12FWD+12REV
CREEPER + SYNCHRO SHUTTLE	16FWD+16REV
POWER FOUR + CREEPER + SYNCHRO SHUTTLE	32FWD+32REV
POWER SHUTTLE	12FWD+12REV
CREEPER + POWER SHUTTLE	16FWD+16REV
POWER FOUR + CREEPER + POWER SHUTTLE	32FWD+32REV
XTRASHIFT + POWER SHUTTLE	36FWD+12REV
XTRASHIFT + CREEPER + POWER SHUTTLE	48FWD+16REV

2- or 4-speed power take-off and Auto PTO

The rear PTO offers two speeds: 540/540e rpm or 540/1000 rpm. A four-speed PTO providing 540/540Ee/1000/1000E rpm is also available as an option. When operating the electronic hitch during headland turns, the Auto PTO function allows the PTO to be automatically engaged and disengaged. The **X4F** can be equipped with a 1,000 rpm front PTO, fully integrated within the chassis for a more compact and robust set-up.

ELECTRO-HYDRAULIC POWER SHUTTLE AND DE-CLUTCH

The **X4F** tractors are fitted as standard with a synchro shuttle. Optionally available is an electrohydraulic power shuttle with electronically modulated shuttle response to suit operating conditions. The system ensures soft starts protecting both the tractor and implements from shock loads for enhanced operator comfort. The Power Shuttle comes with a De-clutch button located on the gear lever that allows the operator to shift through all gears without depressing the clutch pedal.



PTO WITH MODULATED ENGAGEMENT, FOR SUPERIOR COMFORT

A power-assisted button enables smooth and modulated engagement of the PTO. This ensures a soft start-up of the implement for greater operator comfort.

P3-Drive robotised transmission increases comfort and productivity

On the P3-Drive transmission, both the three powershift gears and the four speeds of the Speed Four transmission are power-assisted. The P3-Drive robotised transmission:

- › **Increases Comfort:** The P3-Drive is easily operated from the joystick, for greater operating comfort.
- › **Increases Productivity:** With the P3-Drive the operator can choose between the ease of manual mode, which allows the transmission to be operated with two buttons, and the convenience of automatic mode, which automatically selects the best gear. This allows the operator to concentrate on the job in hand, enhancing productivity.



SUSPENDED FRONT AXLE: MORE **STABILITY**, MORE **AGILITY**



The F, N and XL models can be fitted with a suspended front axle for more stability and agility. The suspended axle gives the **X4F** maximum grip on the ground, even on rough terrain. In the field, traction and handling of the tractor improves, whereas speed, safety and comfort increase on transfers. The suspended front axle is supplied with a diff lock and oil bath disc brakes, for excellent 4-wheel integral braking. The steering angle of up to 55° ensures perfect manoeuvrability in every working situation.

HIGH-PIVOT NARROW AXLE FOR V MODELS

The V model features a narrow rigid-mounted high-pivot front axle with greater swing and a minimum overall width of 1000 mm, making for easy steering in tight spaces.



Wide range of tyres and reinforced rims

The **X4F** offers a range of wheels to meet any work requirements:

- › F and N models: 24" or extra-wide 28" rear tyres.
- › XL model: 24", extra wide 28" or oversized 30" rear tyres for working in both wide orchards and open fields.

The **X4F** can be equipped with reinforced rims with 8-position variable track width, designed for high power tractors. A set-up that allows you to work with greater loads and provides more stability in the field and on the road, further improving productivity, comfort and safety.



ELECTRO-HYDRAULIC DIFF LOCKS FOR EXCELLENT TRACTION

The electro-hydraulic 4WD engagement and Hydralock combined front and rear differential locks ensure excellent traction even on the roughest terrain. In addition, the Auto function enables engagement and disengagement during headland turns and transportation for improved working comfort.

THE HYDRAULIC SYSTEM IS DESIGNED FOR **VERSATILITY**

The hydraulic system can be configured to the needs of each farmer.

Farmers perform a variety of tasks on the farm and grow different types of crops. The **X4F** features a highly configurable hydraulic system that can be tailored to the specific needs of each farmer. The modular design of the hydraulic system allows the **X4F** to handle a wide variety of tasks such as orchard work, storage operations or green maintenance activities.

The hydraulic system of the X4F delivers efficiency.

The hydraulic system of the **X4F** is not only highly flexible, but also extremely efficient thanks to the new triple pump hydraulic system. The **X4F** delivers a flow of 54 l/min at only 1,500 rpm, 25 per cent less than the usual 2,000 rpm. This advantage generates significant savings in terms of lower consumption and reduced maintenance costs.

The electronic rear hitch is powerful, comfortable and productive.

The electronic rear hitch of the **X4F** lifts up to 2,700 kg. The XL has a maximum lift capacity of 3,400 kg, the highest in the segment. With the Auto PTO function the PTO engages and disengages automatically when the hitch is raised or lowered at headlands, resulting in greater convenience, reduced operator stress and enhanced productivity.



A TAILOR-MADE HYDRAULIC CIRCUIT



A WORLD-CLASS REAR HITCH

The Category 2 mechanical or electronic 3-point rear hitch is capable of lifting 2,700 kg. On the XL model, two assistor rams increase the lift capacity up to 3,400 kg, providing class-leading lifting performance.

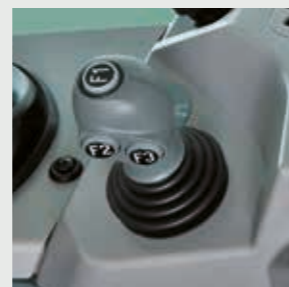
The fully customisable hydraulic system of the X4F is designed to offer each farmer the configuration best suited to their specific needs.

The standard hydraulic system includes a double pump with 58 + 30 l/min, the first supplies the rear hitch and the spool valves while the second powers the steering system. A 58 + 30 + 36 l/min triple pump is also available: two pumps supply the rear hitch and the rear and mid-mount spool valves with a maximum flow rate of 88 l/min, of which 54 l/min already available at an engine speed of only 1,500 rpm; the third is a high-flow pump dedicated to the steering circuit.

The design of the hydraulic circuit allows up to 7 spool valves to be fitted:

- › 4 rear, mechanical or electro-hydraulic spool valves.
- › 3 mid-mounted, electro-hydraulic spool valves.

The X4F can also be equipped with a flow selector, a 4- or 6-way diverter valve to control multiple functions with a single spool valve, and a flow diverter to regulate the oil flow to the spool valves. In addition, it can be fitted with hydraulic stabilisers, top link and right lifting rod; all movements are controlled via 2 push buttons allowing the implements to be easily attached and adjusted while working.



AN ERGONOMIC JOYSTICK OPERATES THE IMPLEMENTS

The front and mid-mount implements are operated via an intuitive joystick for unrivalled comfort and ease of operation. With the P3-Drive transmission, a multi-function joystick controls both the implements and transmission.

HIGHLIGHTS

- › Open centre hydraulic circuit: double pump with 58 + 30 l/min; triple pump with 58 + 30 + 36 l/min. The X4F is even more efficient thanks to a total flow rate of 88 l/min.



FENDER-MOUNTED CONTROLS FOR EASIER ACCESS

External PTO and hitch controls are located on the rear fenders, making it easier to attach implements from the ground.



QUICK-RELEASE COUPLINGS

Quick-release couplings at the front and rear make connecting implements quick and easy: saving time and improving working comfort has never been easier.



Intuitive hitch for easier and more productive work

The electronic hitch of the X4F is controlled via intuitive controls ergonomically arranged on the right-hand panel. In addition, the sensors located on the lower links of the 3-point hitch increase sensitivity, making implement operation easier, thereby increasing productivity.

Front hitch and PTO for outstanding versatility

The electronic hitch and PTO, fully integrated into the chassis for greater compactness and strength, give the X4F unrivalled versatility. The Category 1 or 2 front hitch is equipped with quick-release couplings and lifts 1,700 kg. The electrohydraulically engaged front PTO provides a speed of 1,000 rpm.





McCORMICK **DIGITAL SOLUTIONS** BRING THE FUTURE TO THE FIELD

Technological innovation improves working conditions, increases productivity and protects the environment. Following this philosophy, the Argo Tractors Group has prepared its tractors for the most cutting-edge digital and telematic technologies. This will help farmers manage their machinery fleets and their farms more efficiently and remotely, wherever they are. **McCormick Digital Solutions** offers a range of advanced functionalities:

Telemetry and Remote Diagnostics: Thanks to the Fleet & Remote Diagnostics Management system, telemetry monitors your fleet analysing tractor performance data, while remote diagnostics enables tractor parameters to be monitored and managed from a remote location

Precision Farming: The Precision Steering Management satellite guidance system improves working accuracy and efficiency; the ISObus system ensures efficient control of implements, including in automatic mode.

Farm Management: McCormick Farm manages prescription maps and simplifies farm management.

Digital Services: The My McCormick app provides easy access to the McCormick world.

Cloud Data: The Agrirouter cloud platform allows integrated communication among all services.

McCormick Digital Solutions give you more performance, more efficiency and more profitability while improving simplicity, safety and comfort.



FLEET & REMOTE DIAGNOSTICS MANAGEMENT: PROFIT ASSURED



McCormick, a brand globally recognised as synonymous with high performance and cutting-edge technology, equips all its tractors with remote management and diagnostic capabilities. The **McCormick Fleet & Remote Diagnostics Management system** helps farmers make informed data-driven decisions that will reduce their operating costs while increasing the efficiency and productivity of their farms. The system, which can be easily accessed from a computer or a mobile device, allows farmers to remotely monitor the activity of each tractor and analyse the data of their entire fleet of vehicles. This advanced solution is based upon four key elements:

1. Real-time fleet monitoring
2. Data analysis
3. Scheduled maintenance and remote diagnostics
4. Activity history

McCormick is fully committed to addressing the needs of modern agriculture with concrete and effective solutions. The **McCormick Fleet Remote Diagnostics Management system** helps farmers manage their farms more efficiently by favouring the most appropriate choices in order to maintain their tractors in good working order, optimise their work and increase their business profitability.

1. Real-time fleet monitoring: The system displays at all times the exact location of each tractor in a fleet and, using the Geofencing technology, notifies whenever a vehicle enters or exits a specified zone. It also measures the efficiency of each tractor by checking parameters like speed, engine hours and RPMs, fuel and AdBlue levels, average consumptions and work progress.

2. Data analysis: The data coming from the tractors allow the system to measure the productivity of each vehicle in the fleet and the farm's operating profit. These data are essential to monitor and reduce costs, make predictions, organise work plans and take informed decisions.

3. Scheduled maintenance and remote diagnostics: The tractor fleet is managed in a simple and fast manner. In case of failure, our aftersales service intervenes remotely in real time in order to adopt the most appropriate solutions and to improve the tractor's performance, thereby reducing downtime and extending the equipment's life.

4. Activity history: This function delimits the work areas and stores the data of the activities performed. This allows the user to better organise the work, increase efficiency and productivity and maximise profitability.



McCORMICK FARM TECHNOLOGY FOR A MORE PRODUCTIVE FARM

McCormick improves the efficiency of your farming operations. But not only this: **McCormick Farm** connects your tractor to an intelligent and intuitive farm management system. This brings farmers a number of benefits in terms of time saving, work simplification and enhanced performance.

360-degree management solutions for your farm

McCormick Farm supports more than 400 different crops and allows virtually all tasks on the farm to be accomplished, including crop management, tracking and planning of field activities, advice on crop protection and irrigation practices, creation and exchange of prescription maps with monitoring of costs and sustainability, export of documents.

Connected to your McCormick

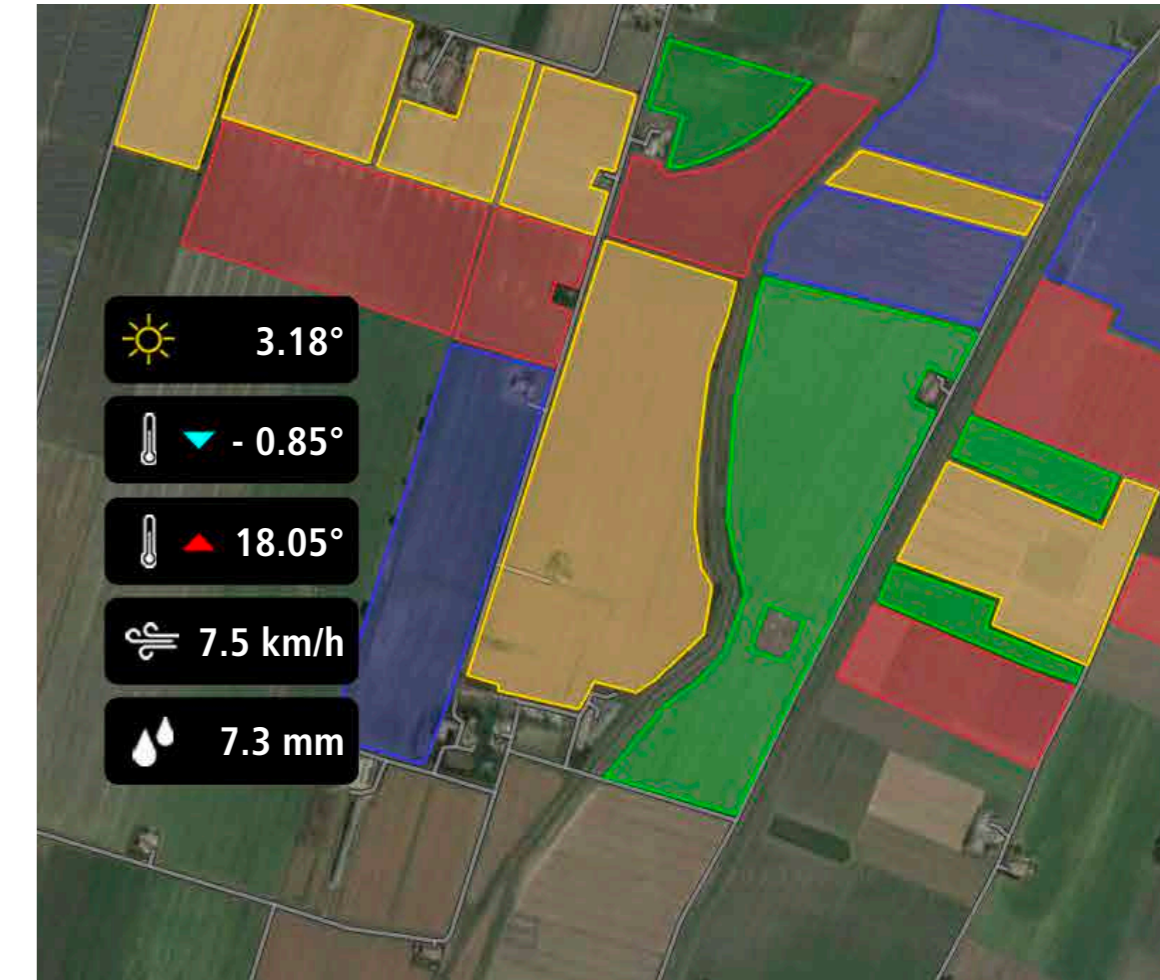
By connecting your McCormick to the **McCormick Farm** app, you can view performance levels and reports on the farming activities carried out in the fields. In addition, you can display prescription maps, A/B lines, boundaries and obstacles.

Always at your fingertips

Whether in the field or on the farm, McCormick is always at your side, thanks to the **McCormick Farm** app for smartphone and tablet. And if you want to run your business from your computer, you may access the web version synchronised with the mobile devices.

Simple and intuitive

McCormick Farm is designed to be clear and user-friendly. A support chat answers questions about the use of the app.





PRECISION STEERING MANAGEMENT FOR PRECISION PERFORMANCE



Precision farming has been in existence ever since man started to cultivate land. Today, thanks to technological development, precision farming is carried out with cutting-edge tools that improve efficiency and increase productivity.

McCormick uses the innovative **PSM (Precision Steering Management)** system, a set of integrated devices for satellite-assisted guidance that can be managed from the tractor cab via an intuitive touch screen, on which the tasks to be performed in the field can be easily imported. Thanks to the precise automated steering control, the tractor only deviates 2 cm from the desired route, eliminating overlaps. This helps operators work with more speed and accuracy and reduces operating costs and environmental impact while raising efficiency and productivity in the field.

ISOBUS & ISOBUS GREEN MAKE YOUR WORK SIMPLE AND EFFICIENT

In 2015, Argo Tractors received the AEF ISObus certification. The **ISObus** system is the standard protocol through which the on-board computer communicates with the tractor and implements. The automatic control of **ISObus**-compatible implements allows variable-rate applications to be delivered through prescription maps generated by McCormick Farm. All **ISObus**-compatible implements are managed via a DSM 12"

touch screen monitor to improve operating efficiency and productivity. McCormick is a leading participant in the innovative **ISObus Green** project. This project allows farmers to retrofit their mechanical implements with the technology so as to connect them to the tractor's **ISObus** system. This solution maximises the efficiency of every implement.

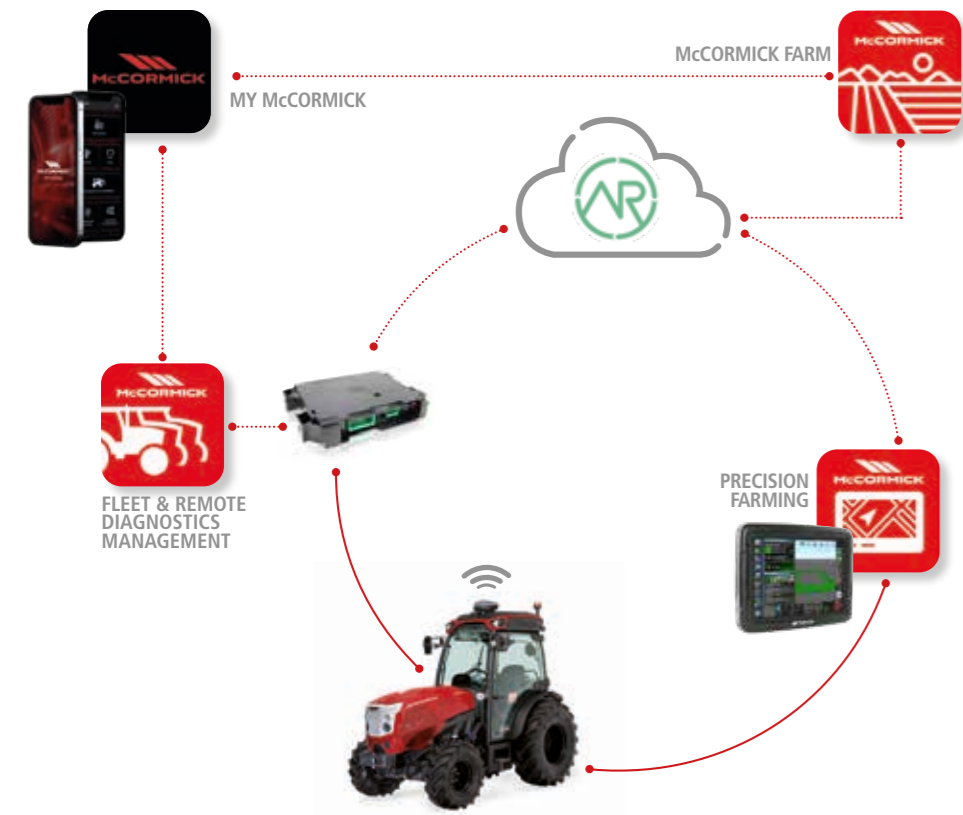
Precision Steering Management & ISObus bring benefits into the field

The **Precision Steering Management** and the **ISObus** system are innovative technologies adopted by McCormick to increase efficiency and productivity while improving comfort and safety:

- › All implement activities are managed with a high level of accuracy, including in automatic mode.
- › Difficult manoeuvres are simplified, thereby reducing operator fatigue.
- › When the driver must attend to driving and simultaneously control the implements, the PSM satellite-based guidance system will allow them to fully concentrate on the task at hand.
- › The satellite guidance system tracks field operations with maximum accuracy. Thanks to the RTK protocols, the automatic steering allows a deviation of only 2 cm from the set route.

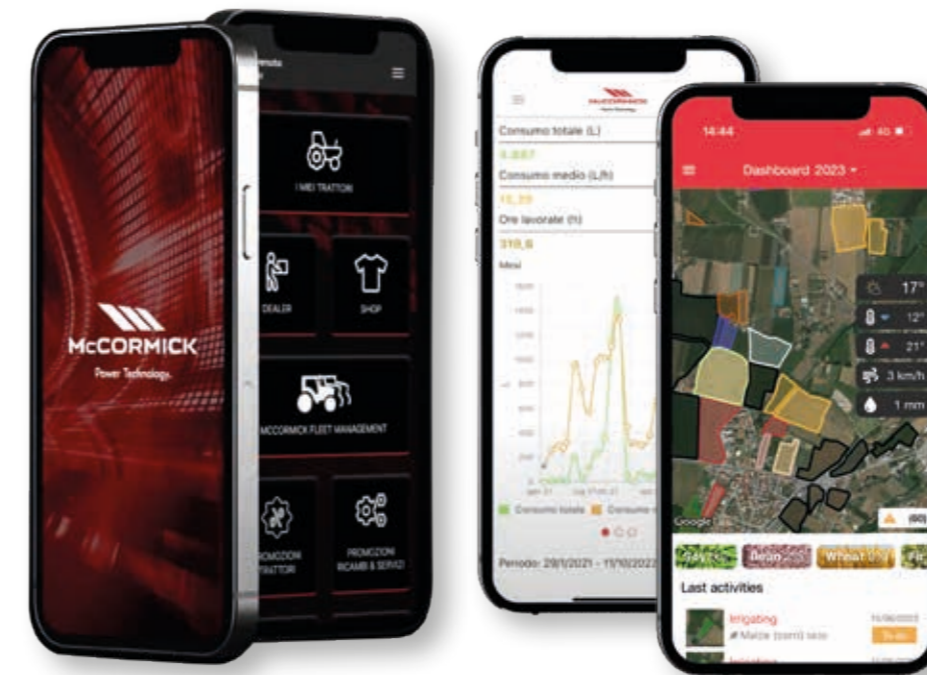
- › Reducing the travelled distance in the field reduces tractor and implement wear and tear and saves fuel.
- › The use of variable-rate applications based on prescription maps generated by the McCormick Farm platform eliminates skips and overlaps, minimizing product waste. Variable-rate technology reduces overuse of water, seed use by 10%, fertilizer use by 16% and herbicide use by up to 60%.
- › Chemical residues are also reduced with significant benefits for the environment.
- › Reports and pre-setting operations are simpler and can be done autonomously without recourse to skilled personnel.
- › The PSM technology integrates seamlessly with the ADS system to precisely execute the planned driving trajectories without requiring additional devices.

ARGO TRACTORS FLEET ROUTER MANAGEMENT SIMPLIFIES YOUR WORK



The new digital technologies have rapidly multiplied the sources and destinations of data. Today, it is paramount for both small farmers and large agricultural businesses to enable different systems to communicate with each other. For this reason, on March 30, 2023, Argo Tractors has become an **Agrirouter** certified partner with the account *Argo Tractors Fleet Router Management*. **Agrirouter** is a universal data exchange cloud platform that allows the interchange of information between machinery, equipment and software of different manufacturers. **Agrirouter** links different sources and platforms, simplifying the operating processes and ensuring data confidentiality. The operator keeps everything under control with a single system. By connecting the tractor to the implements, including those from different manufacturers, and to the McCormick Farm platform, a simple and efficient integrated management of both machinery and farm is achieved.

MY McCORMICK APP, THE McCORMICK WORLD IN YOUR HAND



The intuitive **My McCormick** app offers the user a 360-degree immersive experience through our Digital Solutions. The **My McCormick** app gives you easy access to all McCormick digital services, allowing you to stay connected with the company through news, insights, offers and customised information. With **My McCormick** you can:

- > Register your McCormick tractor fleet and access the scheduled maintenance program.
- > Access the McCormick Fleet & Remote Diagnostics Management system.
- > Access the McCormick Farm platform.
- > Stay updated with the very latest news and events from the McCormick world.
- > Stay informed on promotions and offers of tractors, original spare parts and services.
- > Stay updated with new products, promotions and events from the nearest dealer.

McCormick is always at your side. With the **My McCormick** app you have the whole McCormick world at your fingertips, so you stay informed and optimise your work making it more efficient and productive.

THE X4F SETS PRODUCTIVITY IN MOTION



Compliance with Stage V standards and full operational visibility.

The X4F tractors fully meet the Stage V/Tier4 Final emissions regulations using the DPF, DOC and SCR systems and the AdBlue technology. The exhaust gas after-treatment system fits under the bonnet without requiring modification. This innovative solution allows unobstructed view in all directions while maintaining the tractor compact design.

New filter usage strategy saves time and costs and enhances performance.

An innovative filter usage strategy extends intervals between maintenance interventions, from 500 to 1,000 hours. This generates a significant reduction in downtime and lower maintenance costs, resulting in increased efficiency.

With the Engine Memo Switch engine speed is managed quickly and precisely.

With a simple push of a button, the Engine Memo Switch allows the operator to store and recall the engine speed best suited to the task at hand. A solution that makes work more efficient and faster, resulting in improved comfort and productivity.

Deutz-AG TCD Stage V engine, the powerful and clean heart of the X4F

More power, lower fuel consumption and more versatility than ever before. These are the benefits provided by the new Deutz AG TCD 2.9-litre, 8-valve, 4-cylinder engines with power ratings of 75 to 112 hp. These engines are equipped with turbocharger, intercooler, electronic common rail injection system and reach the maximum power between 1,500 and 2,000 rpm. They come with either a 65 or 85 litre fuel tank, depending on the model. The passive regeneration of emissions and the Engine Memo Switch, a device which allows the operator to store and recall the engine speed best suited to the implement used, keep fuel consumption to a minimum.

Eco-friendly Stage V engines

Innovative DPF + DOC + SCR technology enables the X4F to comply with Stage V / Tier 4 Final emissions regulations. This exhaust gas after-treatment system consists of a DPF passive-regeneration particulate filter, a DOC oxidation catalyst, an SCR selective catalytic reduction system for models over 75 hp, and an easy-fill 7.5 l AdBlue tank. The after-treatment system fits under the bonnet without modification, keeping the tractor front uncluttered for maximum visibility while still maintaining a compact design.





QUICK AND EASY MAINTENANCE TO GET YOU BACK UP AND RUNNING

The **X4F** is proved to be versatile and reliable, with solutions designed to make maintenance easier and quicker:

1. Much longer servicing intervals: up to 1,000 hours.
2. The fully opening bonnet and removable side panels allow full access to the engine, making inspection and maintenance quicker.
3. The engine oil can be topped up without opening the bonnet, as the oil filler cap with dipstick is located in the lower part of the engine.
4. Due to its location, the engine suction filter is easy to clean and replace.
5. The radiators, fitted at the front of the engine, and the laterally-removable dust cover allow for simple, fast and thorough cleaning.
6. The positive pole of the battery is located on the tractor front to make the cable exit easier.
7. Topping up with AdBlue is quick and easy, thanks to the new flap door on the bonnet and a specially designed cap that allows topping up without being unscrewed.
8. The air filters, fitted on the cab roof, are easy to access and protected by quick-release grids for fast maintenance.
9. Oil level in the transmission can be easily checked thanks to the oil filler cap with dipstick located at the tractor's rear.



McCORMICK ORIGINAL SPARE PARTS, THE CORNERSTONE OF YOUR PRODUCTIVITY

Although it works hard, your McCormick tractor always looks good as new. With McCormick original parts, time seems to have stopped. Our original spare parts are an integral part of our scheduled maintenance and extended warranty program. Developed by the same engineers who design and manufacture the McCormick tractors, genuine McCormick parts are designed and manufactured to the highest quality standards to ensure reliable and safe performance over time. The strong points of McCormick original spare parts are the following:

- Spare parts are always shipped within 24 hours of order receipt.
- Each part comes with a 12-month warranty and is marked with a tamper-proof hologram that certifies the product's quality and originality.
- Original McCormick parts are reliable and convenient: they improve your tractor performance, maintain high productivity levels and preserve your tractor's value. All McCormick spare parts rely on our extensive design and manufacturing expertise. Because when you choose McCormick, you are choosing quality without compromise.



POWER TECHNOLOGY, SINCE 1847

Cyrus Hall McCormick was born in Virginia, United States, in 1809. A keen inventor, he stunned the agricultural world with inventions that mechanized the farm work. In 1831 he invented the first mechanical reaper. In 1847 McCormick established a factory for the production of grain harvesters. In 1866 the company adopted the red colour that still identifies the brand worldwide. In 1871 McCormick manufactured more machines than any other company in the world: 250 reapers per day. The first tractor, the Mogul 8-16, was launched in 1906. In those years, the company opened up factories in Canada, Great Britain, Germany, France and Sweden. In the following years, the company was purchased and sold several times. In

2000 McCormick was acquired by the Argo Group, which relaunched the brand under the name McCormick Tractors International Limited. Today, McCormick is a world leader in the tractor industry and its name stands for uncompromising technology and innovative design. Thanks to heavy investments in research and development, the new generation of McCormick tractors leads the market for performance and innovation. Farmers look for efficient, reliable and versatile solutions to maximise their productivity – and this is exactly what we are proud to offer our customers.

		X4.080 F-N-V-XL	X4.090 F-N-V-XL	X4.100 F-N-V-XL	X4.110 F-N-V-XL	X4.120 F-N-V-XL
ENGINE						
Manufacturer		Deutz AG				
Model		TCD 2.9 L4 HT		TCD 2.9 L4 HP		
Rated power (ISO)	hp/kW	75 / 56	78 / 58	85 / 63	95 / 70	104 / 77
Max power (ISO)	hp/kW	75 / 56	90 / 66	95 / 70	102 / 75	112 / 82
Rated engine speed	rpm	2200				
Max power engine speed	rpm	1500	1700	1700	1800	2000
Max torque	Nm	375	378	400	410	420
Max torque engine speed	rpm	1600				
Torque backup	%	56	50	46.3	34.9	25,7
Displacement	cm ³	2900				
Cylinders / valves		4 TA / 8				
Emissions category		Stage V / Tier 4 Final				
After-treatment system		DOC + DPF		DOC + DPF + SCR		
Air filter system		Power Core				
Air intake system		turbo aftercooled				
Fuel injection system		high pressure common rail electronically controlled				
Maintenance interval		1000 hours				
Cooling system		liquid				
Fan type		○ viscostatic				
Engine Memo Switch		●				
CAPACITIES						
Fuel tank	l	80 (F) / 65 (N-V) / 85 (XL)				
AdBlue / DEF tank	l	-		7,5		
Coolant tank	l	5				
TRANSMISSION						
Type		● Speed Four - ○ Power Four (Hi-Lo) / Xtrashift (HML) / P3-Drive (HML)				
No. of gears FWD+REV		● 12+12 - ○ 16 + 16 creeper / 24 + 24 Hi-Lo / 32 + 32 Hi-Lo +creeper / 36 + 12 HML / 48 + 16 HML +creeper				
Minimum speed	m/h	300 (F) / 280 (S-V) / 340 (XL)				
ECO engine speed at 40 km/h	rpm	●				
Transmission control		● manual (Speed Four / Power Four / Xtrashift) - ○ multifunction joystick (P3-Drive)				
Reverse shuttle		● mechanical synchro shuttle - ○ electrohydraulic RPS with modulation control				
FRONT AND REAR AXLES						
Front axle type		● rigid - ○ suspended (F-N-XL)				
Traction type		4WD with electrohydraulic engagement				
Front differential lock		● limited slip (F-N-XL w/rigid front axle) / Hydralock (V) - ○ Hydralock (rigid / suspended)				
REAR PTO						
Type		● servoassisted clutch - ○ electrohydraulic multidisc clutch (w/RPS)				
Speeds	rpm	● 540-540E - ○ 540-1000 / 540-540E-1000-1000E / groundspeed PTO				
Engine speeds at rated PTO speeds		1944 (540) / 1628 (540E) / 1917 (1000) / 1621 (1000E)				
Rotation - spline shaft type		clockwise (viewed from tractor rear) - 1-3/8" PTO shaft with 6 splines				
Auto PTO		○ w/electronic rear hitch				
BRAKING SYSTEM						
Front braking system		- (V) ○ wet multidisc brakes (F-N-XL w/Hydralock front axle)				
Rear braking system		wet multidisc brakes				
Parking brake		mechanical				
Trailer braking system		○ hydraulic brake as per MR & EEC directives / hydraulic brake as per CUNA regulations				
HYDRAULIC SYSTEM						
Circuit type - pump type		● open-centre - twin pump - ○ open-centre - triple pump w/total flow availability for hitch and remotes				
Flow rate hitch & remotes + steering	l/min	● 58+30 36+58+30 (94 available for hitch and remotes)				
Rear remote valves		● 2 mechanicals - ○ 1+1 hydraulic motor / 2 + 1 kick-out / 2 + 1 hydraulic motor / 2 + 1 hydraulic motor + 1 / 4 electronic hitch				
Mid-mounted remote valves		○ 1 / 3 electronic hitch				
Front quick couplings		○ 2 + 1 free flow return / 4 + 2 free flow return / 6 + 1 or 2 free flow return / 8 + 2 free flow return				
Free flow return		●				
Flow divider w/flow selector		○ 3 sections				
Hydraulic oil take out		● 25 ○ 30 (w/RPS)				

REAR HYDRAULIC HITCH						
Type		● mechanical with position/draft/mixed control - ○ electronic with position/draft/mixed control				
Category - coupler type		● Cat.2 - fixed ball ends - ○ Cat. 2 - quick-hitch hooks with mechanical or hydraulic top link				
ELS Ergonomic Lift System		○ for mechanical rear hitch				
Max lift capacity at hitch points	kg	● 2700 - ○ 3400 (XL w/assistor rams)				
FRONT HYDRAULIC HITCH						
Type		○ electrohydraulic				
Category - coupler type		Cat.1/2/2N - quick hooks				
Max lift capacity at hitch points	kg	1400 (F-N-XL) / 1100 (V)				
FRONT PTO						
Type		- (V) ○ electrohydraulic multidisc with modulated engagement (F-N-XL)				
Speeds	rpm	1000				
Engine speeds at rated PTO speeds	rpm	1800				
Rotation - spline shaft type		counter-clockwise (viewed from tractor front) - 1-3/8" PTO shaft with 6 splines				
DRIVING POSITION						
Cab type		● 4-post high-visibility monocoque cab w/flat floor and opening front and rear windows				
Cab suspension		● suspended on hydro-silentblocks - ○ mechanical suspension with dampers (F-XL)				
In-cab noise level	dB(A)	73				
Cab air filter - filtration category		● dust filter - Cat. 2 - ○ active carbon filter - Cat.4				
Air conditioning		● manual A/C - ○ automatic A/C w/Cat.4				
Radio system		● radio ready - ○ DAB radio and sound system				
Lights		● halogen driving and working lights - ○ LED driving and working lights				
Beacon light		○ halogen / LED				
ON-BOARD TECHNOLOGY						
Front / rear ISObus connector		○ front and rear ISObus socket				
EazySteer		○ w/Advanced Driving System (ADS)				
McCormick Fleet Management - ready		●				
Fleet & Remote Diagnostic management and McCormick Farm Pro Pack on selected markets		● 1 year - ○ 3 years - ○ 5 years				
WEIGHTS AND DIMENSIONS						
Wheelbase	mm	2140 (F-N-XL) / 2190 (V)				
Height from top of cab to rear axle centre	mm	1875 (Cat.2) / 1930 (Cat.4)				
Height from top of hood to rear axle centre	mm	825 (885 at hood top point)				
Min-max overall width	mm	1330-1770 (F) / 1330-1770 (N) / 1000-1680 (V) / 1500-1950 (XL)				
Min rear tyres - Index Radius IR	mm	380/70R24 - 575 (F-N) / 360/70R20 - 500 (V) / 420/70R24 - 600 (XL)				
Max rear tyres - Index Radius IR	mm	420/70R28 - 650 (F-N) / 360/70R28 - 600 (V) / 420/70R30-480/70R28 - 675 (XL)				
Shipping weight	kg	2900 - 3250 (XL)				
Gross vehicle weight	kg	5250				
Mounting frame for front- and mid-mount implements		○ mounting frame ready				
Front weight support		built-in				
Front weights	kg	○ 6x28 / 8x28 / 4x42 / 8x42 (F-N) ○ 6x36 / 8x36 (XL) ○ 6x28 (V)				
Rear weights	kg	○ 2x45 (1 x wheel) / 4x45 (2 x wheel)				
Key: ● standard ○ optional						

PLATFORM

		X4.080 F-GE-GB-XL	X4.090 F-GE-GB-XL	X4.100 F-GE-GB-XL	X4.110 F-GE-GB-XL	X4.120 F-GE-GB-XL
MOTORE						
Manufacturer		Deutz AG				
Model		TCD 2,9 L4 HT		TCD 2,9 L4 HP		
Rated power (ISO)	hp/kW	75 / 56	79 / 58	86 / 63	95 / 70	105 / 77
Max power (ISO)	hp/kW	75 / 56	90 / 66	95 / 70	102 / 75	112 / 82
Rated engine speed	rpm	2200				
Max power engine speed	rpm	1500	1700	1700	1800	2000
Max torque	Nm	375	378	400	410	420
Max torque engine speed	rpm	1600				
Torque backup	%	56	50	46.3	34.9	25.7
Displacement	cm ³	2900				
Cylinders / valves		4 TA / 8				
Emissions category		Stage V / Tier IV				
After-treatment system		DOC+DPF		DOC+DPF+SCR		
Air filter system		Power Core				
Air intake system		turbo aftercooled				
Fuel injection system		high pressure common rail electronically controlled				
Maintenance interval		1000 hours				
Cooling system		liquid				
Fan type		○ viscostatic				
Engine Memo Switch		●				
CAPACITIES						
Fuel tank	l	65 (F-GE-GB) / 75 (XL)				
AdBlue / DEF tank	l	-		7.5		
Coolant tank		5				
TRANSMISSION						
Type		● Speed Four - ○ Power Four (Hi-Lo) / Xtrashift (HML)				
No. of gears FWD+REV		● 12+12	○ 16+16	creeper / 24+24 Hi-Lo / 32+32 Hi-Lo+creeper / 36+12 HML / 48+16 HML+creeper		
Minimum speed	m/h	300 (F) / 280 (GE-GB) / 340 (XL)				
ECO engine speed at 40 km/h	rpm	●				
Transmission control		manual				
Reverse shuttle		● mechanical synchro shuttle ○ electrohydraulic RPS with modulation control				
FRONT AND REAR AXLES						
Front axle type		● rigid - ○ suspended (F-XL)				
Traction type		4WD with electrohydraulic engagement				
Front differential lock		● limited slip (rigid) ○ Hydralock (rigid / suspended)				
REAR PTO						
Type		● servoassisted clutch ○ electrohydraulic multidisc clutch (w/RPS)				
Speeds	rpm	● 540-540E ○ 540-1000 / 540-540E-1000-1000E / groundspeed PTO				
Engine speeds at rated PTO speeds	rpm	1944 (540) / 1628 (540E) / 1917 (1000) / 1621 (1000E)				
Rotation - spline shaft type		clockwise (viewed from tractor rear) - 1-3/8" PTO shaft with 6 splines				
Auto PTO		○ w/electronic rear hitch				
BRAKING SYSTEM						
Front braking system		○ wet multidisc brakes (w/Hydralock front axle)				
Rear braking system		wet multidisc brakes				
Parking brake		mechanical				
Trailer braking system		○ hydraulic brake as per MR & EEC directives / hydraulic brake as per CUNA regulations				
HYDRAULIC SYSTEM						
Circuit type - pump type		● open-centre - twin pump - ○ open-centre - triple pump w/total flow availability for hitch and remotes				
Flow rate hitch & remotes + steering	l/min	● 58+30 ○ 36+58+30 (94 available for hitch and remotes)				
Rear remote valves		● 2 - ○ 1+1 hydraulic motor / 2+1 kick-out / 2+1 hydraulic motor / 2+1 hydraulic motor + 1 electronic hitch				
Mid-mounted remote valves		○ 1 / 3 sollevatore elettronico				
Front quick couplings		○ 2+1 free flow return / 4+1 free flow return				
Free flow return		●				
Flow divider w/flow selector		○ 3 sections				
Hydraulic oil take out		● 25 ○ 30 (w/RPS)				

REAR HYDRAULIC HITCH						
Type		● mechanical with position/draft/mixed control - ○ electronic with position/draft/mixed control				
Category - coupler type		● Cat.2 - fixed ball ends - ○ Cat.2 - quick hooks w/mechanical or hydraulic top link				
ELS Ergonomic Lift System		○ for mechanical rear hitch				
Max lift capacity at hitch points	kg	● 2700 - ○ 3400 (XL w/assistor rams)				
FRONT HYDRAULIC HITCH						
Type		○ Electro-hydraulic (F-XL)				
Category - coupler type		Cat.1/2/2N - quick hooks				
Max lift capacity at hitch points	kg	1400				
FRONT PTO						
Type		○ electrohydraulic multidisc with modulated engagement (F-XL)				
Speeds	rpm	1000				
Engine speeds at rated PTO speeds	rpm	1800				
Rotation - spline shaft type		counter-clockwise (viewed from tractor front) - 1-3/8" PTO shaft with 6 splines				
DRIVING POSITION						
Cab type		○ 6-post low-profile cab with 228mm high central tunnel and opening rear window				
Cab suspension		suspended on hydro-silentblocks				
Cab air filter - filtration category		● dust filter - Cat.2 - ○ active carbon filter - Cat.4				
Air conditioning		● manual A/C - ○ automatic A/C w/Cat.4				
Radio system		○ radio ready / DAB radio and sound system				
Platform type		● ROPS w/228mm high central tunnel				
Platform suspension		suspended on silentblocks				
Lights		● halogen driving and working lights ○ LED driving and working lights				
Beacon light		○ halogen / LED				
ON-BOARD TECHNOLOGY						
Front / rear ISObus connector		○ front and rear ISObus socket				
McCormick Fleet Management - ready		●				
Fleet & Remote Diagnostic management and McCormick Farm Pro Pack on selected markets		● 1 year - ○ 3 year - ○ 5 year				
DIMENSIONI E PESI						
Wheelbase	mm	2140				
Height from top of ROPS to rear axle centre		1710				
Height from top of cab to rear axle centre	mm	1500				
Height from top of hood to rear axle centre	mm	825 (885 at hood top point)				
Min-max overall width	mm	1355-1855 (F) / 1415-1705 (GE) / 1400-1665 (GB) / 1500-2040 (XL)				
Min rear tyres - Index Radius IR	mm	380/70R24 - 575 (F) / 360/70R24 - 525 (GE) / 360/70R20 - 500 (GB) / 420/70R24 - 600 (XL)				
Max rear tyres - Index Radius IR	mm	420/70R28 - 650 (F) / 360/70R24 - 550 (GE) / 360/70R20 - 500 (GB) / 420/70R30-480/70R28 - 675 (XL)				
Shipping weight	kg	2800				
Gross vehicle weight	kg	5250				
Mounting frame for front- and mid-mount implements		○ mounting frame ready				
Front weight support		built-in				
Front weights	kg	○ 6x28 / 8x28 / 4x42 / 8x42 (F-GE-GB) ○ 6x36 / 8x36 (XL)				
Rear weights	kg	○ 2x45 (1 x wheel) / 4x45 (2 x wheel)				
Key: ● standard ○ optional						




Power Technology.

via G. Matteotti, 7 | 42042 Fabbro [RE] Italia | t. +39.0522.656.111 | f. +39.0522.656.476
webmaster@argotracors.com | www.argotracors.com



graphic design: **gruppo saldatori** | bzzbz@grupposaldatori.com
All data and illustrations provided in this brochure are for information purposes only and can be changed without notice


6732663A1